

Electronics for the Future



# ROHM Group Corporate Profile

2023 / 2024

ROHM Co.,Ltd.

## Company Mission

Quality is our top priority at all times. Our objective is to contribute to the advancement and progress of culture through a consistent supply, under all circumstances, of high quality products in large volumes to the global market.

## Statement

# Electronics for the Future

ROHM will continue to support the development of society and the enrichment of people's lives into the future by solving a variety of social issues with our electronics technology.

## Management Vision

We focus on power and analog solutions and solve social problems by contributing to our customers' needs for “energy savings” and “miniaturization” of their products.



## Top Message

Electronics for the Future  
Becoming a company that  
solves social issues through electronics

ROHM Co., Ltd.  
President  
Chief Executive Officer



As efforts to achieve a sustainable society accelerate around the world, companies are emphasizing activities that help solve social issues, such as the environment and health. For ROHM these ideas are far from new, as we have contributed to the advancement of culture since our founding by providing good products and manufacturing based on our Company Mission. And although the scale of our company and business environment have changed significantly over the 60 years since ROHM was established, our philosophies remain unchanged, having been passed down from generation to generation as part of our DNA.

To reaffirm this unwavering Company Mission and clarify our mission within the new social infrastructure, we formulated Statement and Management Vision.

This pledge clearly states our commitment to continue be a company that continues to help enrich people's lives and contribute to the advancement of society into the future by using electronics to solve various social issues.

The importance of semiconductor and electronic components - ROHM's core products - is increasing, especially as we work toward achieving a decarbonized society, which is quickly becoming a pressing issue.

As the expectations of our customers and society grow, in addition to accelerating our efforts toward the development of new products and technologies, stable product supply, and environmental considerations in manufacturing, we will build a stronger management foundation, both financial and non-financial, in anticipation of dramatic growth over the next 10 years based on our Medium-Term Management Plan.



# Technology

Based on our Company Mission, ROHM seeks to improve cultural progress through a wide range of products, from ICs and discrete semiconductor devices to modules and passive components.

## Power Management/ Power Supply ICs



Power Management ICs



High Voltage DC-DC Converters



AC-DC Converters

## Motor/Actuator Driver ICs



High Voltage Fan Motor Drivers



Isolated Gate Drivers

## General-Purpose ICs



Memory, Op Amps, Comparators, Reset ICs, and more

## Sensor ICs



Accelerometers, Brightness Sensors, Barometric Pressure Sensors, etc.



## Microcontrollers



General-Purpose MCUs



Speech Playback MCUs

## Wireless Communication Devices



Sub-GHz Wireless ICs



Wi-SUN Modules

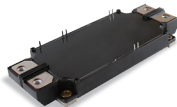
## SiC (Silicon Carbide) Power Devices



SiC Schottky Barrier Diodes

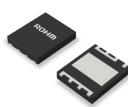


SiC MOSFETs

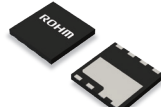


Full SiC Power Modules

## GaN (Gallium Nitride) Power Devices



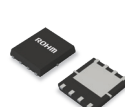
GaN HEMT



## Transistors



Bipolar transistors, MOSFETs, IGBTs, etc.



## Diodes



Schottky Barrier Diodes, Fast Recovery Diodes, TVS Diodes, etc.



## LEDs/Laser Diodes



Compact Chip LEDs



Compact Reflector LEDs



High Output Lasers

## Resistors



High Power Shunt Resistors, High Reliability Resistors, etc.



## Thermal Printheads



High Durability Thermal Printheads for Receipts/Labels



Ultra-High-Speed Thermal Printheads for Industrial Equipment



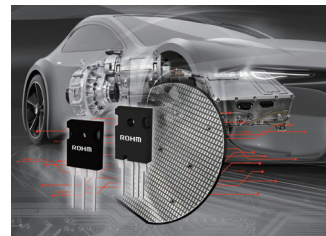
# Solution

We will accelerate solution proposals from among our broad portfolio, focusing on our strengths in power and analog products. At the same time, we will contribute to solving social issues by ensuring not only device characteristics, but also providing peripheral components that maximize performance.

## Toward achieving a decarbonized society

### ■ Energy-Savings

Semiconductors (ROHM's core products) play a major role in improving the efficiency of motors and power supplies, which are said to account for most of the world's electricity consumption. In addition to power devices utilizing industry-leading SiC technology, our lineup includes control ICs, power diodes, shunt resistors, and other peripheral devices that maximize device performance. ROHM provides valuable solutions by leveraging the synergistic effects of original power and analog technologies.



### ■ Miniaturization

Improving the performance of power devices and analog ICs also reduces the number of peripheral components such as batteries and cooling components. ROHM contributes to system miniaturization and weight reduction by providing optimized solutions matched to both characteristics and specifications. We are also working to make effective use of limited resources, for example by developing ultra-compact devices packed with original miniaturization technology.



## Toward a safer, more secure society

As technological innovation in the automotive sector accelerates, ensuring occupant safety has become an important issue. ROHM is expanding its product lineup to support functional safety that helps prevent accidents by thoroughly pursuing safety performance at the semiconductor level. As a result, ROHM's 'ComfySIL™' brand now includes over 1,000 part numbers.

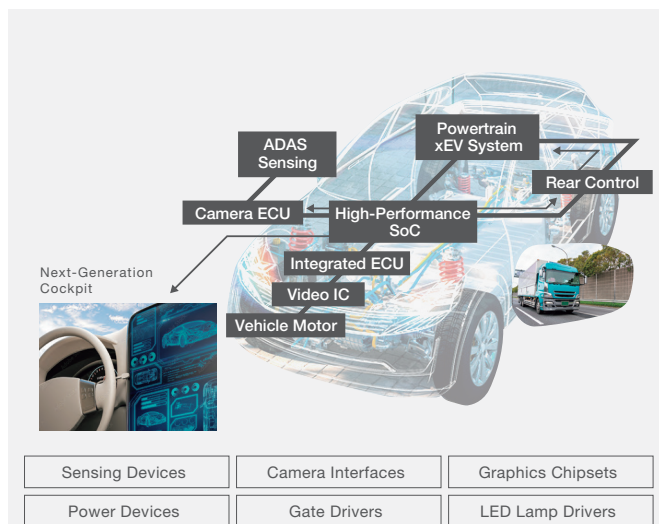


We have launched a new website that consolidates products under the ComfySIL™ brand to support functional safety in automotive systems. Improving the searchability of products and various documents contributes to greater work efficiency for electronic circuit and system designers in the automotive field.

### ComfySIL™ Website

<https://www.rohm.com/functional-safety>

※ ComfySIL™ is a trademark or registered trademark of ROHM Co., Ltd.





# Reliability

Underscoring ROHM's innovating manufacturing is the Vertically Integrated Production System in which all processes, from material procurement to assembly, are carried out within the Group. In addition to thorough quality control, we ensure a stable supply by flexibly responding to contingencies.

## High Quality

In pursuit of 'Quality First', we are engaged in activities to enhance quality in all processes, from development and production to marketing and services, throughout the entire Group.

## Stable Supply

ROHM ensures stable long-term supply by accelerating manufacturing innovation and supply chain optimization centered on integrated production that is less susceptible to external influences.

## Vertically Integrated Production System IDM (Integrated Device Manufacturer)

### Special attention on raw materials

Wafer production from silicon ingot pulling



Raw silicon



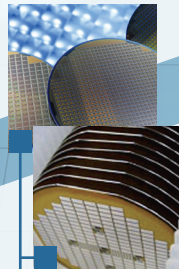
Silicon Ingot

### In-House Photo Mask

Pursuing high quality through integrated quality control, from IC chip design layout to photo mask production



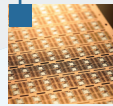
Photo Mask



Wafer Process

### In-house dies and lead frames

To provide high quality, some lead frames and molds are produced in-house to help control the quality of outsourced products and ensure stable supply



Frame



Die / Mold



Assembly Line



Packaging



Module

### Wafer Process

Innovative device development from the wafer process, centered on our production facilities in Japan

### Cutting-edge packages

Our overseas production facilities leverage the latest assembly technologies together with unmatched quality

## TOPICS Stories of Manufacturing

Over the years, ROHM has continued to advance by passing down original technologies made possible through a pioneering spirit. The story of ROHM's strengths in manufacturing together with the passion of its employees have been captured in a video.



Analysis Center, Quality Division  
Stories of Manufacturing #01

Please read QR code for the videos



## SiCrystal

A ROHM Group Company

### SiC Single-Crystal Wafer Manufacturer

SiCrystal, a German SiC single-crystal wafer manufacturer, became a member of the ROHM Group in 2009



SiCrystal

Si  
Silicon

SiC  
Silicon Carbide



Wafer

CAD

# Sustainability

The ROHM Group contributes to achieving a sustainable society through its business activities.



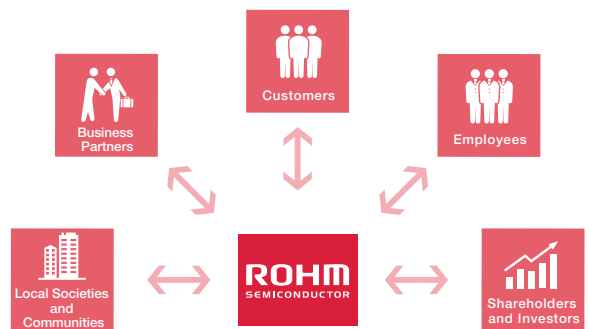
## CSR and CSV compromise the core of our business activities

Since its foundation, the ROHM Group is pursuing the sustainable development of the Group and the sound development of society by building relationships based on mutual trust with stakeholders through the implementation of our Company Mission and Basic Management Policy. In particular, our Company Mission expresses our firm desire to enrich society through our business. Based on these, we will work to be a company that meets the expectations of our shareholders by fulfilling CSR in line with social demands and international norms while using SDGs as a source of CSV to develop innovative products and promote high quality manufacturing that will lead to solving social issues.



## Aiming for sustainable development together with stakeholders

Based on our Company Mission and Basic Management Policy, our Sustainability Policy is designed to contribute to the sustainable development of society through honest, fair, and transparent business activities from a global perspective. We classify our stakeholders into five categories while establishing good relationships with each of them through close communication in order to gain the trust of society and achieve the sustainable development of the company. In 2021 we re-identified 10 sustainability priority issues important for the sustainable growth of both ROHM and society and developed indicators for their achievement. We will strengthen communication by disclosing the progress of these initiatives.



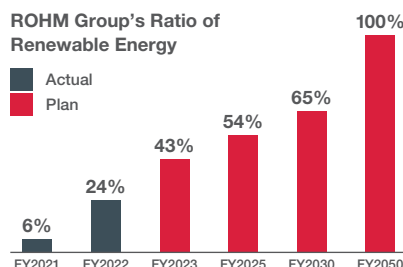
ROHM Group Sustainability Policy

### TOPICS

## Accelerating the introduction of renewable energy towards an environmentally friendly production system

As corporate responsibility shifts to realizing a decarbonized society, we are steadily achieving our annual targets under our Environmental Vision 2050, which focuses on climate change, resource circulation, and coexistence with nature.

At our production sites in particular, we are actively promoting the establishment of an environmentally friendly system through the early adoption of renewable energy.



Please visit our website for more information on our sustainability initiatives.

<https://csr.rohm.com/>







[www.rohm.com](http://www.rohm.com)

#### Corporate Overview

<b>Company Name</b>	<b>ROHM Co., Ltd.</b>
<b>Address (HQ)</b>	<b>21 Saiin Mizosaki-cho, Ukyo-ku, Kyoto 615-8585 Japan Tel: +81-75-311-2121 Fax: +81-75-315-0172</b>
<b>Date Established</b>	<b>September 17, 1958</b>
<b>Capital</b>	<b>86,969 million yen (as of March 31, 2023)</b>
<b>Representative</b>	<b>President CEO Isao Matsumoto</b>
<b>Net Sales</b>	<b>Consolidated 507,882 million yen (fiscal year ended March 2023)</b>
<b>Number of Employees</b>	<b>Consolidated 23,754 (as of March 31, 2023)</b>



Please read QR code for  
ROHM Integrated Report

